

County Meath, Ireland

VØLUND™ WASTE-TO-ENERGY TECHNOLOGY

PROJECT CASE HISTORY



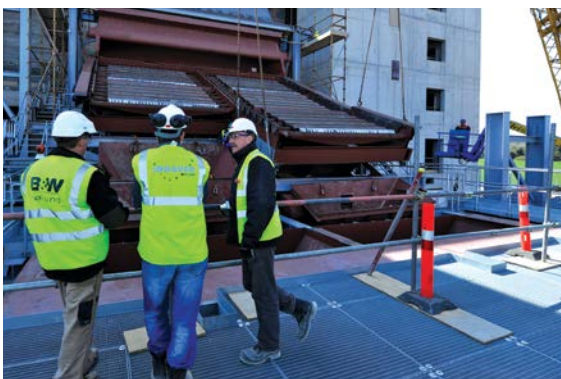
Located some 40 kilometres north of Dublin, Ireland's first waste-to-energy plant began delivering electricity to the city's grid in November 2011. Babcock & Wilcox Renewable (B&W) provided the boiler, combustion grate, combustion control, and selective non-catalytic reduction (SNCR) system.

The combustion system features our industry-leading Vølund™ technology DynaGrate® combustion grate. The Belgian company Indaver served as the turnkey supplier in the project and operator of the plant.

Project Approach

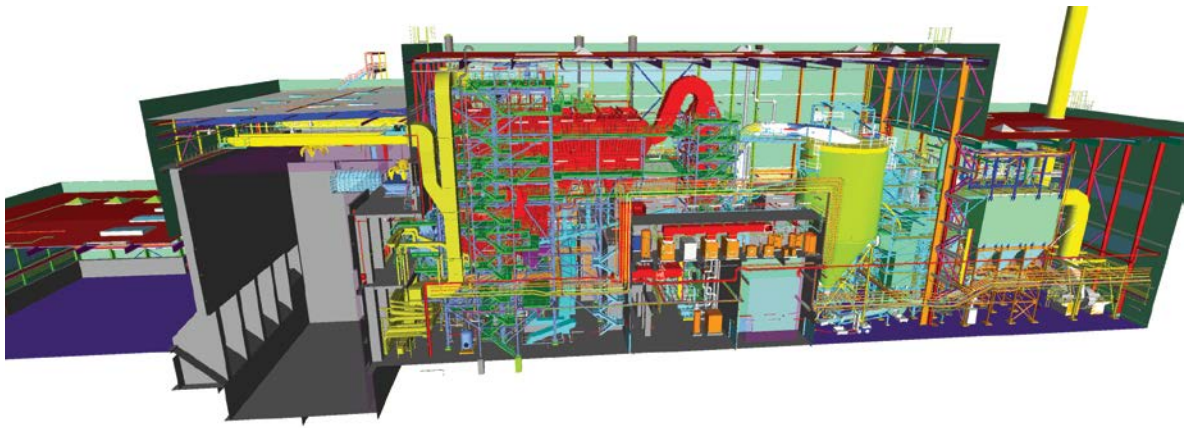
The Meath plant was delivered on schedule as a result of our project methodology and the excellent partnership with Indaver.

B&W's proven project execution is a result of strong project management skills and close project team cooperation with our client and subcontractors. Our project managers are certified with the International Project Management Association (IPMA).



Meath is the first WtE plant in Ireland. 20,000 households in the county will now be provided with waste-powered electricity.

continued ►



To arrive at the most optimal technical solutions we focus on strong communication skills and project management tools. Our project teams are close units of experienced people who cover all aspects of the project with their combined knowledge and skills.

Health and Safety

In Ireland, safety is a top priority. B&W won the Safety Award for Contractor of the Month several times during the project, and the project was successfully completed without any accidents. One of the reasons are that we implemented the concept of Human Performance Improvement (HPI) which is a tool for the prevention of major incidents that could result in unnecessary costs including accidents and errors.

B&W maintains high standards with continuous training and management involvement to reinforce our primary commitment "Safety First."

Plant design data (per line)		
Process parameters	Guaranteed Values*	Units
Waste capacity	26.7	t/h
Heat value, lower	8.0	MJ/kg
Steam output	82.7	t/h
Steam temperature	400	°C
Steam pressure	43	bar
Thermal input	69.3	MW
Thermal efficiency	86.9	%
TOC, bottom ash	3	%
Feed water temperature	130	°C
Boiler outlet flue gas temp.	190	°C

Flue gas values: Out of boiler	Guaranteed Values*	Units
NO _x **	160	mg/Nm ³
CO***	150	mg/Nm ³
NH ₃ **	10	mg/Nm ³

* All values refer to 11% O₂ dry gas
 ** Daily
 *** 1/2 hour

Babcock & Wilcox
 Dybendalsvaenget 3
 2630 Taastrup
 Denmark
 Phone: +45 76.14.34.00

www.babcock.com/renewable    

The information contained herein is provided for general information purposes only and is not intended nor to be construed as a warranty, an offer, or any representation of contractual or other legal responsibility.

Vølund and DynaGrate are trademarks of The Babcock & Wilcox Company or its affiliates.



RENEWABLE | ENVIRONMENTAL | THERMAL

Established in 1867, Babcock & Wilcox is a global leader in renewable, environmental and thermal technologies and services for power and industrial applications.

For more information or to contact us, visit our website at www.babcock.com.