

# CEMSCAN® System RS Continuous Emissions Monitoring

The latest KVB-Enertec® CEMSCAN® system from Babcock & Wilcox (B&W) is an affordable, off-the-shelf solution designed for combustion turbine, continuous emissions monitoring system (CEMS) applications.

Financial benefits are realized throughout the CEMSCAN system's life cycle. A standard mechanical design enables a quick turnaround, from order to onsite operation time. Readily available access points for site connections enable rapid installation. Quick startup is facilitated by the use of industry standard technology.

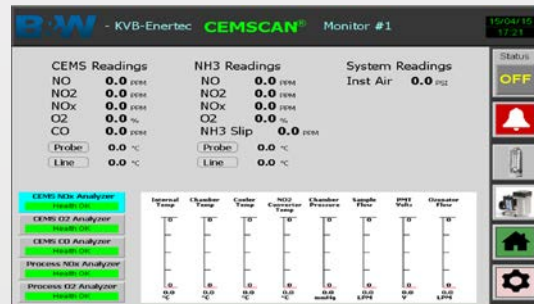
A technician-friendly design based on easily accessible equipment mounted on swing-out doors or slide rails provides easy maintenance.



## Revolutionary Technology

### Comprehensive system

The entire system is housed in a standalone single unit with attractive cabinetry. The components are located to facilitate access.



### Operational advantage

A smart user interface allows for CEMS information to be available at multiple touch points. The plant floor operator interfaces through a touch panel on the cabinet door. The CEMS information is also available through external web access.

Proactive notifications for events and alarm information enable timely and appropriate responses to potentially costly situations. Remote troubleshooting is available via PC, tablet or smartphone.

The CEMSCAN system embraces well known technology. Familiar user interfaces facilitate quick operation. Industry standard computer communications provide connectivity to a data acquisition handling system (DAHS) and personal devices.

(Continued on reverse side)

## The KVB-Enertec Advantage

Through its KVB-Enertec emissions monitoring product line, B&W is one of the largest and most experienced CEMS/DAHS companies in the industry. We are a leading supplier to the power, refinery, industrial, turbine, petro-chemical, steel, chemical, process emissions, manufacturing and small boiler industries.

- Long-standing vendor relationships allow us to provide cost-effective and highly reliable solutions
- Over 20 years experience in the CEMS technology business
- Leaders in the industry with the largest worldwide installed base



### Service, Startup and Certification

A field service team will successfully startup and certify your equipment. Our field service team members are strategically located and equipped to provide CEMS support. Our services include all of the required equipment calibration checks, corrections, maintenance and repairs required by applicable regulations and OEM specifications.

The CEMSCAN system uses analyzer technologies (paramagnetic, ultraviolet, chemiluminescent, NDIR, FTIR, laser TDL, and flame ionization detectors) to measure parameters such as NO<sub>x</sub>, CO, O<sub>2</sub>, CO<sub>2</sub>, SO<sub>2</sub>, HCl, VOC, Hg, flow, temperature, pressure, opacity, particulate and more.

### Customized Technology

Experienced service technicians will perform an analysis of the gas stream to identify the best sampling technology for the process.

### Project Management

Dedicated project managers are assigned to provide seamless execution of your critical project milestones. A full complement of support services is available to provide you with a leading edge product and a platform for successful product and project execution.

## Babcock & Wilcox

KVB-Enertec Products  
2849 Sterling Drive  
Hatfield, Pennsylvania, U.S.A. 19440  
Phone: +1 215.996.9200  
Fax: +1 215.996.9201



[www.babcock.com](http://www.babcock.com)

The information contained herein is provided for general information purposes only and is not intended nor to be construed as a warranty, an offer, or any representation of contractual or other legal responsibility.

KVB-Enertec and CEMSCAN are trademarks of The Babcock & Wilcox Company.



ENERGY | ENVIRONMENTAL

Established in 1867, Babcock & Wilcox is a global leader in advanced energy and environmental technologies and services for the power and industrial markets, with operations, subsidiaries and joint ventures worldwide.

For more information, or a complete listing of our sales and service offices, send an e-mail to [info@babcock.com](mailto:info@babcock.com), or access our website at [www.babcock.com](http://www.babcock.com).