

Titanium® Sootblowing Controls

The Titanium® sootblower control system from Babcock & Wilcox (B&W) is an easy-to-use and cost-effective boiler cleaning control solution. The system is fully functional for remote control of your boiler cleaning system through a touch-screen interface, or can be integrated with your boiler's distributed control system (DCS). Titanium control users can operate up to 300 devices with 70 programmable sequences. With the capability to add advanced control of thermal drains and the optional header PID, as well as the option to control multiple boilers, the Titanium sootblower control system offers a versatile suite of configurable controls at an economical price.

B&W's Titanium suite of sootblower controls is designed so users can easily upgrade as needs or boiler conditions evolve, requiring enhanced control technology. Equipped with industry standard hardware and open architecture, the Titanium control platform is customizable to your unique plant needs.

B&W's experienced team of professionals can quickly and effectively understand your boiler cleaning objectives. We provide:

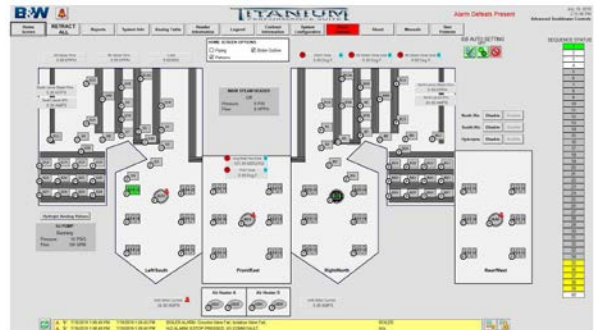
- 24-hour customer service
- Highly qualified and experienced engineers and technical support
- Special service agreements available upon request

Standardization provides fast delivery and reliability

A key benefit of B&W's Titanium sootblower control system is its robust architecture. We use a rugged industrial PLC, standard PLC IEC-1161 code and HMI.

The HMI interfaces to:

1. PC with FactoryTalk® View SE HMI
2. DCS integrated sootblower controls
3. Allen-Bradley PanelView™ HMI



Key Features

- Utilizes industry standard PLC hardware and software tools
- PLC based HMI – IEC-61131 protocol with OPC connectivity
- Seamlessly integrates with DCS control systems
- Able to use most existing I/O
- Controls up to 300 cleaning devices
- Blower historian (optional)

Benefits

- Provides easy migration paths for system enhancements and upgrades
- Can provide lower lifecycle costs
- Detailed alarm history event viewer
- Intuitive operations, quick to commission with little ongoing tuning
- Flexible operator interface; designed to interface with a computer, PanelView HMI or directly to the DCS HMI
- Advanced control for auxiliaries (thermal drain control, header PID, etc.)

continued ►

Specifications and Features

| | |
|-------------------------------|--|
| General | <p>Controls up to 300 sootblowers</p> <p>Monitors three sootblowing headers (continuous mode, warm-up timer, setpoint mode)</p> <p>Advanced control available (thermal drains, header PID, etc.)</p> <p>Multiple modes of header control, including advanced and custom PID controls</p> <p>Optional multi-boiler control</p> |
| PLC Controls | <p>Allen-Bradley PLC</p> <p>Open architecture</p> <p>120 VAC or (optional) 24 VDC discrete I/O modules</p> <p>Analog input module for motor current, steam temperature and pressure, drain temperature (where applicable)</p> |
| HMI Operator Interface | <p>Multiple screens for operation, alarming, control and setup</p> <p>User configurable color-coded icons for improved visual assessment</p> <p>Security levels for protecting adjustments to setpoints and sequences</p> |
| Sequencing | <p>70 fully programmable sequences</p> <p>Tagout/bypass toggle per device for safe sootblower maintenance</p> <p>Programmable time interval delay between sequences</p> <p>Programmable time interval delay between sootblower operations</p> <p>Automatic timed sequence restart/cycling</p> <p>Customizable sequence names</p> |
| Alarming | <p>Alarm history with date and time stamps</p> |
| | <p>Visual alarm descriptions</p> <ul style="list-style-type: none">• Elapsed time• Motor overload• Motor stall• Fail to start |
| | <p>System alarms</p> <ul style="list-style-type: none">• Low header pressure• Boiler trip• Low header flow (PID control)• High header flow (PID control) |

Quality you can trust

As a leading supplier of Diamond Power® boiler cleaning control systems, B&W strives to maintain the highest quality standards for all our products. Each control system undergoes extensive quality tests and inspections, including the use of live inputs and outputs, checking operational functionality and alarms. Before delivery, we ensure that all our products comply with customer specifications as well as all factory acceptance testing requirements.

The Babcock & Wilcox Company

1200 E Market Street, Suite 650
Akron, Ohio, U.S.A. 44305
Phone: +1 330.753.4511

www.babcock.com    

The information contained herein is provided for general information purposes only and is not intended nor to be construed as a warranty, an offer, or any representation of contractual or other legal responsibility.

Titanium and Diamond Power are trademarks of The Babcock & Wilcox Company.

PanelView and FactoryTalk are trademarks of Rockwell Automation, Inc.



ENERGY | ENVIRONMENTAL

Established in 1867, Babcock & Wilcox is a global leader in advanced energy and environmental technologies and services for the power, industrial and renewable markets.

For more information or to contact us, visit our website at www.babcock.com.