



In co-ownership with the city of Stockholm, Sweden, AB Fortum Värme signed a contract in July 2002 for the building of a new waste-to-energy line, P4, at its plant in Högdalen.

The plant capacity

With a combustion capacity of 37 tonnes waste an hour (9.2 MJ/kg), Högdalen P4 is the largest single unit yet undertaken by Babcock & Wilcox Renewable (B&W).

Apart from the large capacity, the Högdalen unit is characterized by flexibility. The plant is capable of burning municipal solid waste (MSW) and industrial waste – mainly refuse-derived fuel (RDF).

The nominal capacity of the plant is 34 t/h waste at a heat value of 10 MJ/kg, corresponding to approximately 275,000 t/year. The boiler generates 115 t/h steam at 36 bar, 400°C.

Scope of supply

By using a combination of new and proven technologies, this waste-to-energy unit has been designed to fit into a small space between the existing units at Högdalen.

B&W's supply includes a furnace/boiler with economiser, a complete ash/slag system and a system for transporting fly ash from the boiler rear pass. Furthermore, a deNO_x plant (dosing of ammonium to the first boiler pass) and a complete electrical and DCS system are included. The building structural steel is also part of the supply.

The grate is a combined water- and air-cooled Vølund™ grate. The waste will be supplied through a water-cooled feeding chute into a fuel pusher, thus ensuring homogenous feeding without the risk of backfires. The new plant supplies steam to two existing steam turbines.

Fast, flexible fuelshifts

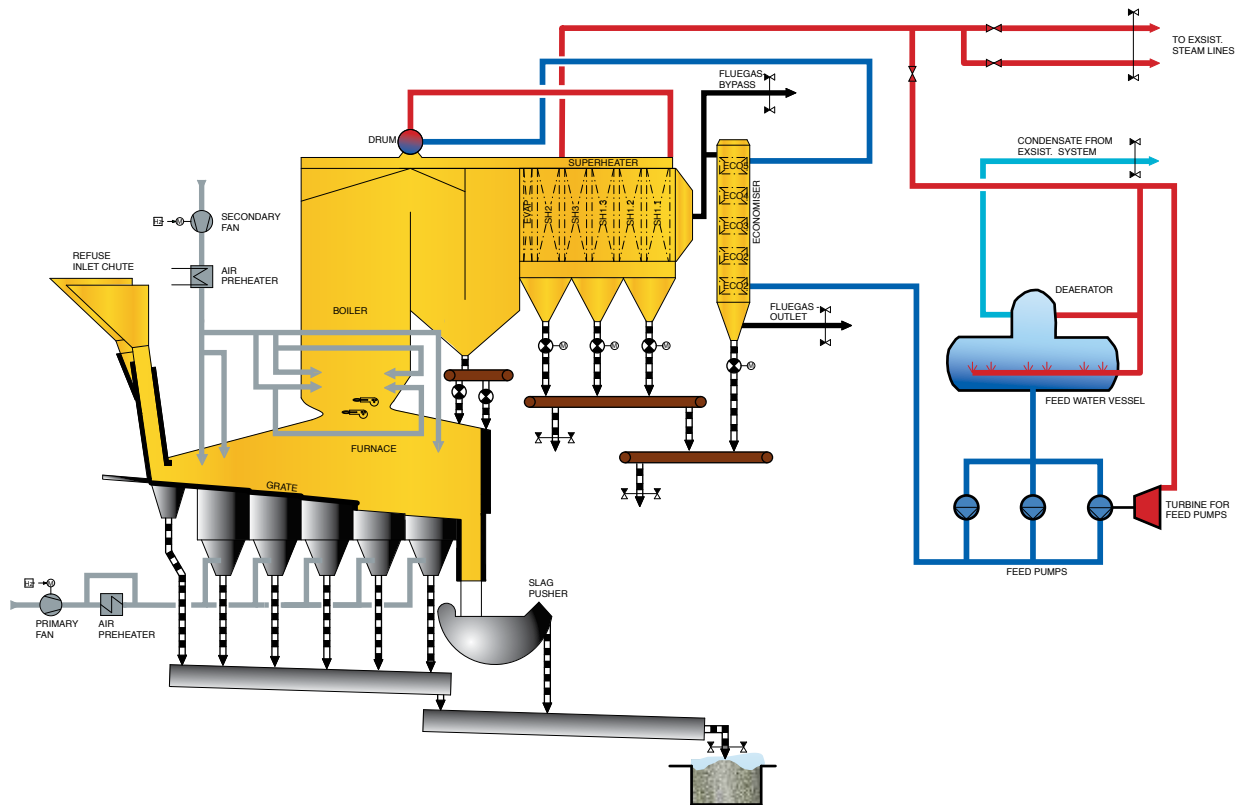
The Högdalen plant is designed with flexibility in mind and is capable of burning MSW and RDF. The main fuel MSW is incinerated five days a week and generates a heating value of 10 MJ/kg. Two days a week the plant combusts RDF.

The heating value of RDF is 16 MJ/kg. Shifts are quick, with the entire process taking less than 2 hours.

Inconel® cladding for protection

Inconel® cladding is used to protect the boiler tubes on the first and second boiler passes, while water and steam blowers clean the heating surfaces in the second and third boiler passes and economiser.

continued ►



PDMS and piping

As with other projects, B&W uses its Plant Design Management System (PDMS) throughout the design and engineering process. This has been very useful in meeting challenges, such as creating the best capacity in a small space between existing units.

The project includes a total of 3.4 km of pipes and 6,300 pieces.

Högdalen was handed over in March 2006.

Plant design data		
Process parameters	Values	Units
Nominal capacity	34	t/h
Nominal lower calorific value for waste	10.2	MJ/kg
Steam flow	115	t/h
Steam temperature	400	°C
Steam pressure	36	bara
Heat output (steam)	86387	KW

Flue gas guarantees: Out of boiler		
	Values	Units
TOC	< 2.5	%
LOI	< 4	%
NO _x	< 80	mg/Nm ³ *)
NH ₃	< 8.0	mg/Nm ³ *)
CO	< 50.0	mg/Nm ³ *)

* Hourly average values, 11% O₂ dry flue gas
The plant limit values comply with the EU directive on waste incineration

Babcock & Wilcox

Falkevej 2
DK-6705 Esbjerg Ø
Denmark
Phone: +45 76.14.34.00

www.babcock.com/volund    

The information contained herein is provided for general information purposes only and is not intended nor to be construed as a warranty, an offer, or any representation of contractual or other legal responsibility.

Volund is a trademark of The Babcock & Wilcox Company or its affiliates.

Inconel is a trademark of Huntington Alloys Corporation, a subsidiary of the Special Metals Corporation.



RENEWABLE | ENVIRONMENTAL | THERMAL

Established in 1867, Babcock & Wilcox is a global leader in renewable, environmental and thermal technologies and services for power and industrial applications.

For more information or to contact us, visit our website at www.babcock.com.